

## Contents

MPC SMB and NFS Guide PCH-A100 .....	1
SMB or NFS? .....	1
Recap:.....	1
Change list V1.1: .....	1
Preparing PC Shared Folder (XP Pro ex.) .....	2
Enabling Advanced Security .....	2
Enabling Guest Account .....	2
Sharing a folder on PC.....	2
Connect PCH A-100 to PC over SMB.....	3
How to use this shared folder? .....	3
Preparing NFS Shared Folder (NAS) .....	3
Connect PCH A-100 to NAS over NFS .....	3
Help in editing the NFS link.....	4
Troubleshooting NFS / SMB.....	4
Extra Tip NFS on Windows PC.....	4
Configure Hanewin NFS Server.....	4
Connecting the PCH to PC NFS folder .....	5
MPC Message .....	5

## MPC SMB and NFS Guide PCH-A100

Even though it isn't hard to do, as a new user, one can find a pretty tough challenge in finding their way to successfully create a connection between the PCH and their PC or NAS. This guide offers help in understanding the hidden catches for making SMB and NFS to work along with some basic trouble shooting if it all seems to go wrong, even after using this guide.

### SMB or NFS?

The selection between SMB and NFS is rather simple. SMB is mainly great for its integration into windows operating systems and offer a no hassle connection between media player and PC/NAS based on the SAMBA standard. In the background, SMB uses the "Public Access" or "Guest Account" security to connect. So if on your PC / NAS both are enabled, you can connect to your data much like any folder on your PC from the media player.

SMB however is rather limited in performance and is only recommended for normal DivX, Xvid and maybe even DVD ISO content. Since the PCH A-100 is also capable of HD media (Vc-1, H.264, x.264 and so on), SMB is not sufficient. For those files, it is better to use NFS system as it allows better performance and more stable for streaming video.

**Notice:** NFS is not supported on all NAS systems. Do not take it for granted and double check it is featured before making a purchase. Can't hurt to have it, does hurt to not have it. Discuss on MPC forums prior to purchasing and we'll help you on your way.

On a PC, one can install so called "NFS Applications" that allow also the PC to be used for NFS but we will mainly concentrate around NAS servers and how to get things done out of believe, it is a far more convenient method and avoids usage of the PC.

### Recap:

SMB – Ok for normal video content only, no HD  
NFS – Best to use for HD content (OK for both SD/HD)

The PCH A-100 allows up to 5 sources being used so one can mix few SMB sources and NFS sources all together. We will work with 2 PC connections and 3 NFS connections to our NAS supporting NFS leading up to 5 shares. In the end, we will have SD content loaded from PC over SMB and both SD and HD content from our NAS.

Let's get started!

### Notice:

Even though we use the PCH A-100 as a reference, the same methods and software apply to other media players. We tend to recommend prior to buying software / hardware to first double check if everything will be supported as it should in the forums unless you are 100% certain of your own research.

### Change list V1.1:

1. Added Hanewin NFS server PC section
2. Added banner title to enhance style document

Extra Note: Some of the references used in this guide are based on latest FW. The same options are available in older versions but might be located under different categories. Get stuck? Contact us on the forums and we'll help ya find your way.

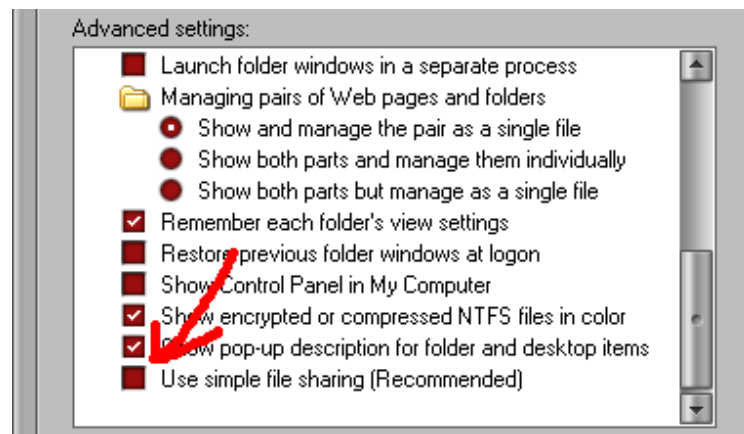
## Preparing PC Shared Folder (XP Pro ex.)

Every OS has a different method slightly with security. If you run into trouble because you use Windows XP Home Edition or Vista, please discuss on the forums and we'll get things sorted.

### Enabling Advanced Security

By default, Windows will implement "Simple File Sharing" which we will have to adjust to "Advanced File Sharing". This can be done following the next steps.

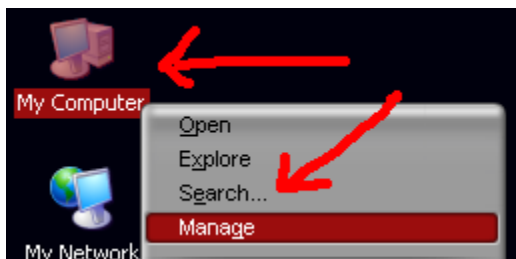
1. Open "My Computer"
2. Use the "Tools" menu and click on "Folder Options"
3. Select the "View" TAB
4. Go to the bottom of the list "Advanced Settings"
5. Deselect "Use Simple File Sharing"
6. Save the changes made and we are done.



### Enabling Guest Account

In order for the media player to be allowed access to any shared folders we create later, we must enable the Guest account on our PC.

1. "Right Click" on "My Computer" on your desktop
2. Select "Manage" from the menu



3. From the list, expand "Local Users and groups"
4. Select "Users" now and "Enable" the "Guest" account. (Double click on Guest and remove the

selection from "Account is Disabled". Now save the changes and close all windows.

### Sharing a folder on PC

Now that we have adjusted the file sharing and enabled the GUEST account, we can start preparing the actual folders we'd like the PCH A-100 to grab content from. Move to the folder you would like to share and "right click" on the folder, selecting "Properties".

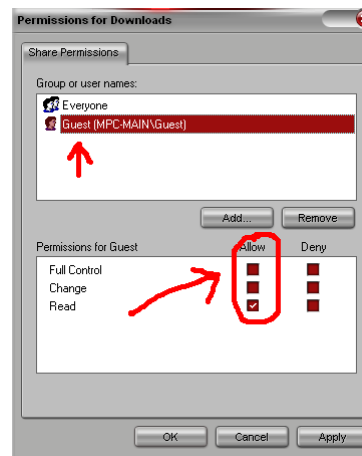


From this pane, we will adjust all settings necessary including access rights and share name for the folder which we will later use to connect to with the PCH A-100.

Follow the steps explained next to set proper share rights. Notice, in our guide we use the folder "Downloads" as our target.

1. Select the "Sharing" TAB
2. Mark the "Share This Folder" button
3. Enter a "share name" for this share to be called.
4. Click the "Permissions" button.
5. Now, add the "Guest" account to the list of users.

You can click the "Add" button for adding accounts. Next,

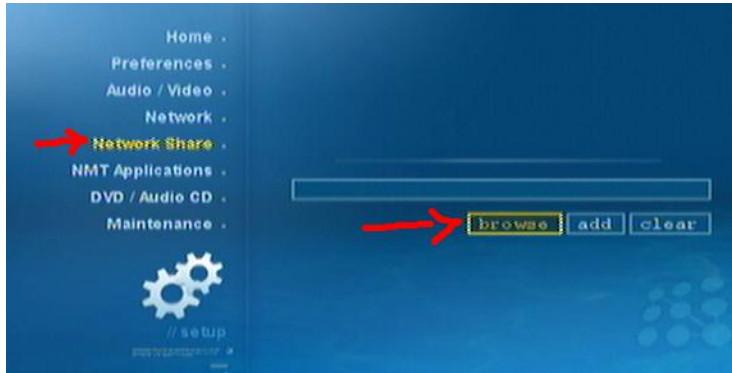


adjust the rights assigned to this user for "Read" only. We do not want write access for this account even though PCH A-100 allows copying and deleting content if using "Write Access". You will have to make up your mind on your own for that. Any settings can be changed at any time later on.

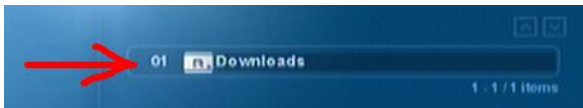
Now save all changes made and close all windows again. It's time to move to the PCH A-100 now and connect to this PC folder over SMB.

## Connect PCH A-100 to PC over SMB

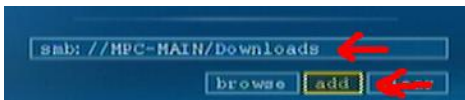
On the "Main menu" of the PCH, select "Setup" and go down to "Network Share". Select "Browse" and hit "Enter".



Now "Browse" your network and find the folder which we shared before on the PC. Once found, confirm when the folder is selected by pressing "Enter".



Now the PCH A-100 will enter the path. Select the "Add" button to have this folder saved on the PCH A-100 as a source.



The share is now listed as a favorite on the PCH A-100 as 1 of the total of 5 shares allowed to be added. You can see the amount of shares your PCH will use from the same page, where currently 1 share is listed. You can also see this is "SMB" share as shown in the title.



If you created more than 1 share, you can repeat these steps to add more shares until all shares are listed. Again, remember there is a limit of 5 and leave at least 1 spot available for NFS which we will do next.

## How to use this shared folder?

Once all the work is done, from the PCH A-100 main menu, select "Media Sources". The folder should now be listed on the

main page and be accessible for the PCH A-100 to grab content from for playback.

## Preparing NFS Shared Folder (NAS)

Next what we will do is create a NFS source. We will not repeat all the steps as above as everything remain the same regardless of using NFS or SMB except minor changes in the path to be made manually. What is important to know is that not all NAS and PC by default can use NFS. Especially PC needs applications installed while most NAS servers out there do have a setting to enable / Disable NFS.

I suggest reading the specifications of your device or confirm NFS support prior to making your purchase. For help on PC and NFS, use the MPC forums.

In order to use NFS while owning n NFS capable NAS server (Infrant, Synology, Thecus and so on...), all you need to do on the NAS is enable the NFS. Once this is done, you can assign folders over NFS instead of SMB from the PCH A-100.

We have enabled NFS on our NAS and will now show what the difference is in creating the mapping on the PCH A-100. Notice that the folders must be shared for "Public Access" and "Guest Access" just like the PC version.

## Connect PCH A-100 to NAS over NFS

As said, we will not repeat all the steps. Return to the "Setup" menu of the PCH A-100 and go down to "Network Shares" again. Follow the same options as before in the SMB section:

1. Click "Browse" to browse the network
2. Select the "Share" you wish to use

So, now we have selected the folder from our NAS server that we want to use, you should "NOT YET" click on "Add" as we first must alter the "PATH" in the "NFS" variant. You should stop as soon as the link is entered:



3. Now change the "smb" in this link into "nfs"
4. Between the server name and the folder "add" a ":" which should lead to having the following PATH shown in the server link:



When now selecting the "Home Menu" and "Media Sources", the link will have been added. You can visually recognize the SMB and NFS folder by the links shown as NFS will have 2 "://" in the name.



### Help in editing the NFS link

In case you wonder, you can browse up and down to select the different option in the setup menu. Deleting characters is done using the "delete" button on the remote. The ":" is available under the numeric key "1" by pressing it 5 times.

### Troubleshooting NFS / SMB

If you correctly entered the NFS link and the it still does not seem to access the folder on the NAS properly, the following are the most feasible causes for this to happen:

1. NFS: Your NAS / PC does not support NFS
2. NFS/SMB: Settings on the NAS/PC prevent the access (Firewall, software not properly configured etc...?)
3. NFS/SMB: Access rights not set correctly (Public / Guest on PC or NAS)
4. NFS: NFS services not enabled on the NAS

For additional help on specific problems, visit the [www.mpcclub.com](http://www.mpcclub.com) forums and get expert help from hundreds and thousands of other users.

### Extra Tip NFS on Windows PC

For those only having a Windows PC at hand and would like to setup NFS as streaming protocol, this will help you to get started and complete the task at hand.

### Download:

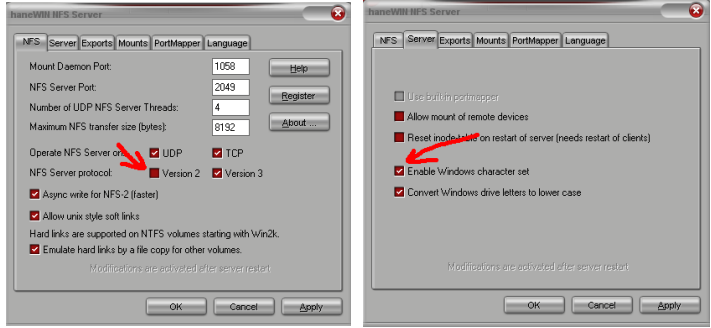
<http://www.hanewin.net/nfs1154.exe> or visit [Hanewin](http://www.hanewin.net) for a newer version if the link no longer works... Install the program by accepting all defaults and once installed, run the Hanewin NFS server. (Evaluation for 30 days, afterwards you can purchase it for €19 none commercial use).

**Note:** for the sake of keeping this tutorial as clear as possible, we will share our complete C: drive with the PopCorn Hour unit as a way of showing how it is done.

### Configure Hanewin NFS Server

Open the software and follow the next steps in order to configure the NFS server properly. Once the software is open, complete the following changes:

1. On the NFS TAB, deselect Version 2
2. On the Server TAB, enable "Windows characters"



3. On the exports TAB, click "Edit exports file" which will open a text pad window. Delete everything in this file and copy the following lines in the text pad:

```
# exports for PoPCorn hour A100 example
C:\ -readonly -name:media 192.168.1.4
```

What the two lines above do, is share the C:\ drive in "read only" mode as a folder called "media" to the PoPCorn Hour A-100 with IP ADDRESS 192.168.1.4. **Make sure the IP address is the one in use by the PoPCorn Hour and not the one from PC.**

4. Now close the text pad after saving and click on the "Restart Server" button. Now you can connect the PoPCorn Hour with NFS to your PC and enjoy better streaming performance.

## Connecting the PCH to PC NFS folder

Since I expect people get stuck adding the proper link into the PCH player after configuring the Hanewin NFS server, I add a sample link, based on the information we used in this guide. The link should be: **<nfs://192.168.1.2:/media>**

Notice, that in this case, we use the IP address of the PC where Hanewin NFS server is installed on. If you do everything correctly, you can now connect to your data located on the C:\ drive of your PC.

## MPC Message

MPC goes thru a lot of trouble and time consuming efforts to enable users finding their way into the digital words including writing up extensive reviews, guides and providing constant support online at the Forums.

MPC is not a commercial organization and therefore counts on the users for keeping MPC healthy in a financial was to continue our work and projects. If you benefit from our work and appreciate everything we do, consider supporting MPC by making a small contribution. In return, you get even more benefits than already available out there...

[http://www.mpcclub.com/mpc\\_options/mpc\\_options.htm](http://www.mpcclub.com/mpc_options/mpc_options.htm)

Thank you in advance!

Yours Truly,  
Hi-Jack